

# Key Investor Information

This document provides you with key investor information about this fund. It is not marketing material. The information is required by law to help you understand the nature and the risks of investing in this fund. You are advised to read it so you can make an informed decision about whether to invest.

## MI Chelverton UK Equity Income Fund ("the Fund") B Accumulation Shares

This is a sub fund of MI Chelverton UK Equity Fund. The Fund is an Open Ended Investment Company. ISIN: GB00B1Y9J570. Maitland Institutional Services Ltd is the Authorised Corporate Director of the Fund.

### Objectives and investment policy

The Fund aims to provide a rising level of income with the potential to grow the amount you invested as well.

The Fund will invest in UK company shares that aim to provide income. These shares will either be fully listed on the London Stock Exchange or listed on AIM (The London Stock Exchange's international market for smaller, growing companies).

The Fund may also invest in money market instruments and cash deposits.

Any income this share class generates will be reinvested to grow the value of your investment.

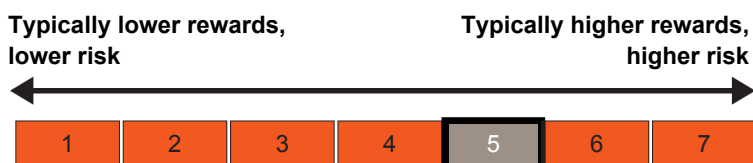
You can buy and sell shares on any business day in London.

Recommendation: this Fund may not be appropriate for investors who plan to withdraw their money within 5 years.

For full investment objectives and policy details please refer to the prospectus.

### Risk and reward profile

The Risk and Reward Indicator table demonstrates where the Fund ranks in terms of its potential risk and reward. The higher the rank the greater the potential reward but the greater the risk of losing money. It is based on past data, may change over time and may not be a reliable indication of the future risk profile of the Fund. The shaded area in the table below shows the Fund's ranking on the Risk and Reward Indicator.



- This Fund is ranked at 5 because funds of this type have experienced medium to high rises and falls in value in the past. Please note that even the lowest risk class can lose you money and that extreme market circumstances can mean you suffer severe losses in all cases. The indicator does not take into account the following risks of investing in this Fund:
- Smaller company shares can be more difficult to buy and sell as they may trade infrequently, in small volumes and their share price may fluctuate more than that of a larger company.
- The level of targeted income is not guaranteed and may not be achieved.
- For further risk information please see the prospectus.

## Charges

The charges you pay are used to pay the costs of running the Fund, including the costs of marketing and distributing it. These charges reduce the potential growth of your investment.

### One-off charges taken before or after you invest

Entry charge	5.00%
Exit charge	0.00%

These are the maximum charges that we might take out of your money before it is invested and before we pay out the sale proceeds of your investment. In some cases, you might pay less and you should speak to your financial adviser about this.

### Charges taken from the Fund over a year

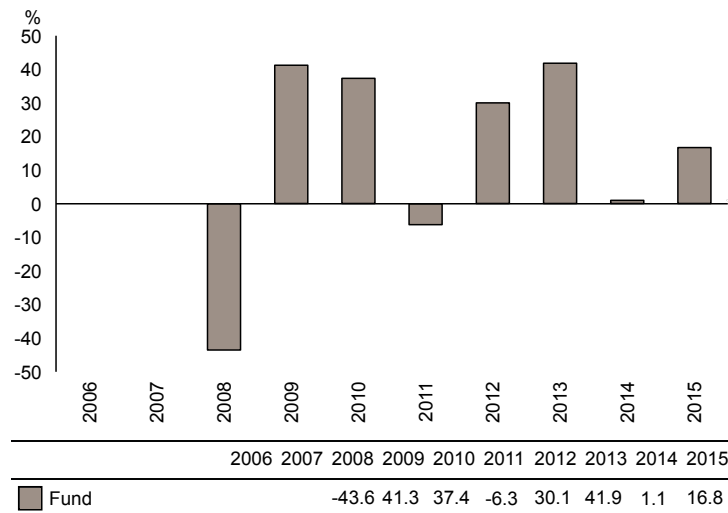
Ongoing charges	0.92%
-----------------	-------

### Charges taken from the Fund under specific conditions

Performance fee	NONE
-----------------	------

- The ongoing charges figure is based on the last year's expenses and may vary from year to year. It excludes the costs of buying or selling assets for the Fund (unless these assets are shares of another fund).
- For the ongoing charge, the figure is at 31 December 2015.
- You may also be charged a dilution levy on entry to or exit from the Fund, this is to cover costs associated with your transaction.
- For more information about charges, please see the prospectus.

## Past performance



Source: FE 2016

- You should be aware that past performance is not a guide to future performance.
- Fund launch date: 01/12/2006.
- Share/unit class launch date: 02/07/2007.
- Performance is calculated in GBP.

## Practical information

- This document is issued by Maitland Institutional Services Ltd and contains information on the B Accumulation Shares only.
- Each fund of the Company has its own pool of assets and liabilities, segregated by law. If one fund were unable to pay for its liabilities the assets of the other funds could not be used to pay for those liabilities.
- You can get further detailed information regarding the Fund, including details of the investment manager and how to switch, buy and sell shares and other share classes available, within the prospectus, the supplementary information document and the annual and half yearly managers' reports You can get these free of charge from Maitland Institutional Services Ltd, Springfield Lodge, Colchester Road, Chelmsford, Essex CM2 5PW or from our website: [www.phoenixfundservices.com](http://www.phoenixfundservices.com). These are available in English only. You can also call us on 0345 305 4217, or look on our website for the latest share prices.
- The remuneration policy of the management company, which describes how remuneration and benefits are determined and awarded, and the associated governance arrangements, is available at [www.phoenixfundservices.com](http://www.phoenixfundservices.com) or on request from the registered office of the ACD.
- The Depositary of the Fund is National Westminster Bank Plc.
- Please note that the tax laws of the United Kingdom may impact your own tax position.
- Maitland Institutional Services Ltd may be held liable solely on the basis of any statement contained in this document that is misleading, inaccurate or inconsistent with the relevant parts of the prospectus for the Fund.